

# State of Wyoming Corner Record

(In compliance with the *CORNER PERPETUATION AND FILING ACT*, Wyoming Statutes, 1977, Section 36-11-101, et. seq., and the Rules and Regulations of the Board of Registration for Professional Engineers and Professional Land Surveyors)

Reverse side of this form may be used if more space is needed.

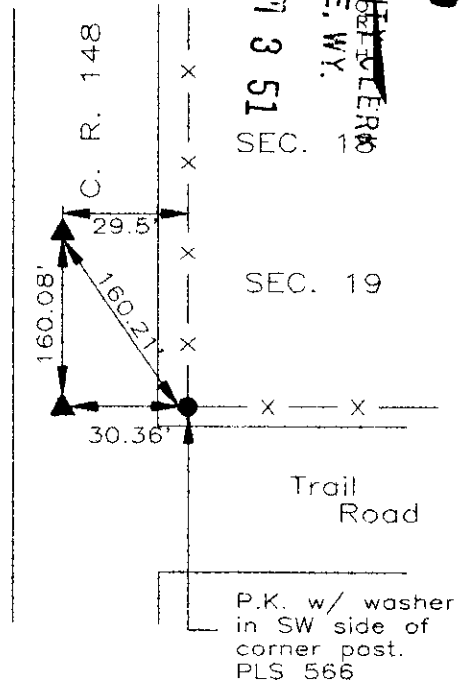
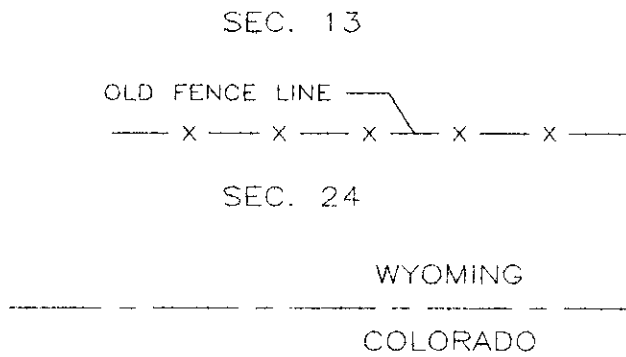
Record of original survey and citation of source of historical information (if corner is lost or obliterated). Description of corner monumentation evidence found and/or monument and accessories established to perpetuate the location of this corner. Sketch of relative location of monument, accessories, and reference points with course and distance to adjacent corner(s) (if determined in this survey). Method and rationale for reestablishment of lost or obliterated corner.

Found Iron Pipe at both locations.  
(3" Iron Pipe, concrete filled, at both locations.)

Reference points were set as shown.

GLO Record:

- 1) Section Corner— Iron Post 3' long x 3" diameter
- 2) Closing Corner— Record unavailable.



164810  
 LARAMIE DISTRICT  
 CHEYENNE, WY.  
 '95 JUL 5 PM 3 51  
 SEC. 19

Date of Field Work: 5-06-94 Office Reference: # 2746

### CROSS INDEX DIAGRAM

A	1	2	3	4	5	6	7	8	9	10	11	12	13	14	15	16	17	18	19	20	21	22	23	24	25
B																									
C		6			5				4					3					2						1
D																									
E																									
F																									
G			7			8			9				10					11							12
H																									
J																									
K																									
L																									
M																									
N																									
O																									
P																									
Q																									
R																									
S																									
T																									
U																									
V																									
W																									
X																									
Y																									
Z																									

Firm/Agency, Address  
 INTERMOUNTAIN PROFESSIONAL SERVICES, INC.  
 5801 OSAGE AVENUE  
 CHEYENNE WY 82001  
 Telephone Number: (307) 632-3138

This corner record was prepared by me or under my direction and supervision.  
 SEAL & SIGNATURE



Corner Name: 15/18 24/19 Section: T12N R62W 6th P.M. Cross-Index No.: N-1